

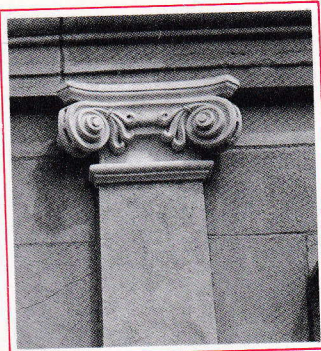
# Rattee and Kett

## CODESTONE FOR RESTORATION

The replacement of decayed carvings and mouldings, frequently found on older buildings, can be prohibitively expensive, yet so much of the architecture of the past owes its character to a wealth of detailing.

Codestone can provide a realistic solution: moulds are taken, on site if necessary, and the section is reproduced as required. If much of the detail has been lost, the original design can be reconstructed by expert carvers.

Careful attention is paid to matching



the colour of the masonry, and samples are provided before work commences. On site the failed area is cut out and the new Codestone piece fixed in position.

## IN SITU REPAIRS TO MASONRY

Sensitive conservation work demands the replacement of the minimum amount of a building's fabric, and when part of a stone or moulding has failed it may be possible to re-build it without replacing the whole section.

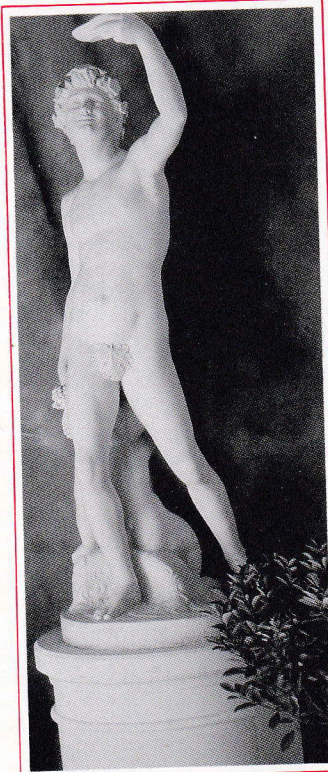
Rattee and Kett use a product developed on the continent and used extensively for much of this century. An excellent match with both limestones and sandstones is possible,

and the material can be used successfully with both.

To make the repair the friable stone is cut away to the sound underneath and a reinforcing cage of wire and pins constructed on the surface. The section is built up in layers to give the required profile, and after hardening can be worked to match the surrounding stonework. Even the characteristic pattern of tool marks can be repeated if necessary.

## SCULPTURE AND DECORATIVE FEATURES

The reproduction of sculpture and decoration has almost endless possibilities, not only in the world of conservation, but in the design of interiors and the landscape. Typical commissions include fountains, statuary, and garden ornaments, and a range of these is produced in Codestone for the Landscape Ornament Company. Sometimes a client or architect will have a particular item which he wants copied, or an original scheme to be realised. Rattee and Kett offer a full service from design and carving through to casting and fixing on site. The range of materials available include resin-based compounds chosen for their high compressive and tensile strength and resistance to frost action. These are particularly useful for statuary and aquatic features, and have the appearance of natural stone or plain marble.



*A reproduction of Bacchus, the God of Wine, after the original sculpture by Sansovino.*



*Capitals in Kett Codestone for the restoration of Hull Railway Station.*

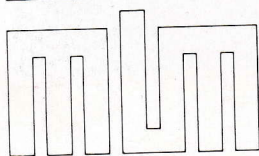


*In situ repairs to the stonework at King's College Chapel, Cambridge.*



*A small part of the range of fountains, urns, and garden furniture produced in Kett Codestone for the Landscape Ornament Company.*

**CONTACT** For further information on Kett Codestone telephone the Codestone Manager at our Cambridge Office.



## Rattee and Kett

Building & Restoration Contractors  
Purbeck Road  
Cambridge CB2 2PG  
Telephone 0223 248061 Fax 0223 410284

Rattee and Kett Northern Office  
17/19 Market Place  
Wetherby West Yorks  
Telephone 0937 64039