

Farmland Museum Full Illustrated Catalogue

All 42 Images with Filenames and Commentary

1. *Art.jpg*



Display of paintings and artwork within the museum, illustrating its wider cultural role.

2. *B'smith & Bygones building.jpg*



View of the Bygones Building and associated exhibits, documenting the museum's development.

3. *Band.jpg*



Outdoor musical performance showing the museum as a community venue.

4. *Bandstand & Bygones Building.jpg*



View of the bandstand and museum buildings recording the layout of the site.

5. Basket making.jpg



Traditional basketry display illustrating rural crafts and fenland traditions.

6. Bedroom.jpg



Reconstructed period bedroom showing domestic life in rural East Anglia.

7. Bill Farthing Reaper.jpg



Traditional reaper associated with agricultural preservation activities.

8. Blacksmith's shop & Slade's car.jpg



Blacksmith's workshop alongside an early motor vehicle.

9. Blacksmith's Shop 2.jpg



Visitors examining blacksmithing exhibits.

10. Blacksmith's Shop 3.jpg



Additional view of the reconstructed smithy.

11. Blacksmith's Shop.jpg



Core exhibit demonstrating the rural blacksmith's trade.

12. Bone.jpg



Archaeological specimen showing the museum's archaeological interests.

13. Cases in 'new' building.jpg



Display cases in a newly developed exhibition space.

14. Cast Signs.jpg



Collection of cast-metal trade and engineering signs.

15. Clement Freud.jpg



Photograph associated with the museum's official opening.

16. Colman advert.jpg



Display linking local industry, advertising and domestic life.

17. County signs & observatory.jpg



Historic county signs surrounding the observatory.

18. County Signs.jpg



County boundary signs representing historic local identities.

19. Craig' Pottery.jpg



Archaeological pottery fragments from local contexts.

20. Dairy at Museum.jpg



Traditional dairy reconstruction with period equipment.

21. Dave Allen with Craig Delanoy.jpg



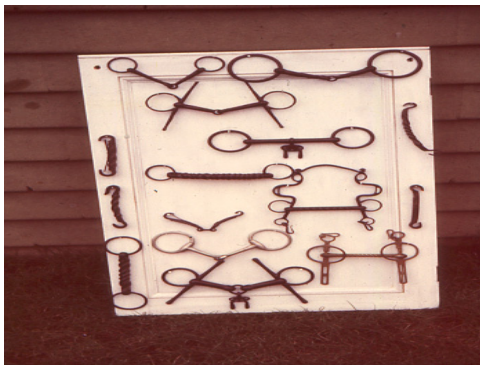
Named individuals connected with the museum.

22. Girls at Fair.jpg



Children enjoying a museum event.

23. Horse bits.jpg



Display of horse harness fittings and bits.

24. House in Soham Fen.jpg



Isolated fenland dwelling and landscape.

25. Invited guests at opening.jpg



Guests attending an official opening ceremony.

26. Kitchen.jpg



Historic kitchen reconstruction.

27. Lathe in Wheelwright's shop.jpg



Woodworking machinery used by wheelwrights.

28. Lathe.jpg



Traditional lathe demonstrating rural craftsmanship.

29. Museum staff - fancy dress.jpg



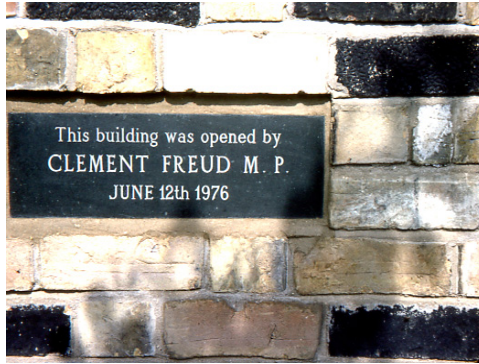
Staff and volunteers in costume during an event.

30. Observatory, Hillrow.jpg



View of the observatory and museum grounds.

31. Plaque on Bygones building.jpg



Opening plaque recording the 12 June 1976 opening by Clement Freud.

32. *Ploughs in snow.jpg*



Agricultural machinery displayed during winter.

33. *Potato Day.jpg*



Display from the museum's popular Potato Day event.

34. *Quern.jpg*



Ancient grain-grinding stone.

35. Smythe drill.jpg



Agricultural seed drill illustrating mechanisation.

36. Spinning (Craft Day).jpg



Traditional spinning demonstrated during a craft day.

37. Spinning, Edith Milton.jpg



Edith Milton demonstrating spinning.

38. Steam Organ.jpg



Decorative fairground steam organ.

39. Tumbril carts at Museum.jpg



Traditional agricultural transport carts.

40. Vet.jpg



Reconstructed veterinary surgery.

41. Victorian Gadgets.jpg



Display of Victorian household and workshop technology.

42. Winter.jpg



Snow-covered museum grounds and observatory.